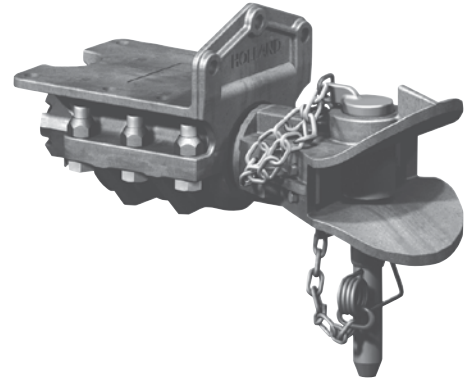


COUPLERS



- Rigid Mount
- Swivel Mount
- Pin & Clevis
- Ball & Receiver Hitch

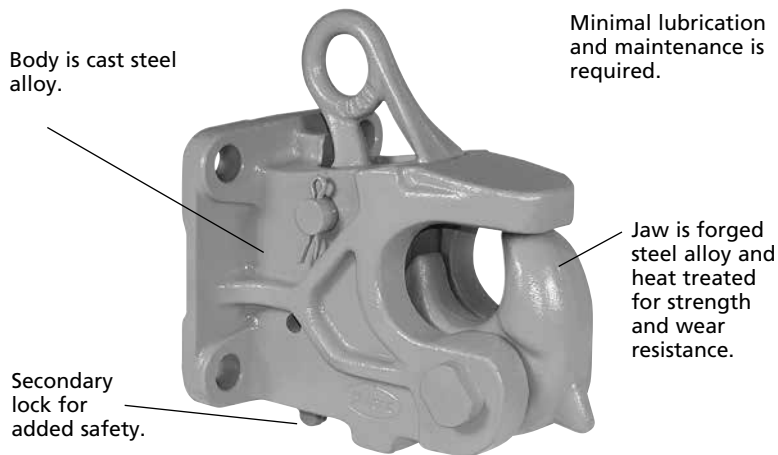


Coupler – Rigid Mount (Over-the-Road)

CP-400-H

Application

A versatile rigid mount coupler used for trailers and equipment in over-the-road and off-road applications. Especially useful when frequent and automatic coupling is desired, and when the weight of the drawbar makes it impractical to lift. The latch automatically closes and locks upon coupling.



Weight: 26 lbs. (11.8 kg)

Capacities

30,000 lbs. (13,610 kg) Maximum Gross Trailer Weight
 7,500 lbs. (3,400 kg) Maximum Vertical Load

Drawbar Eye Dimensions

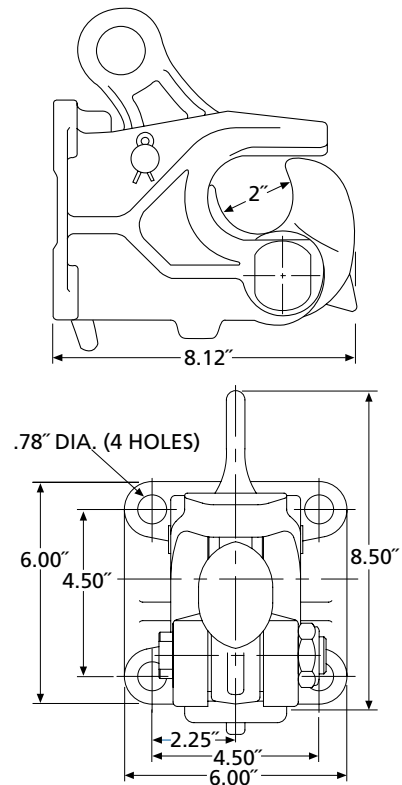
2.50" to 3" I.D. with 1.25" to 1.63" diameter section.

Additional Information

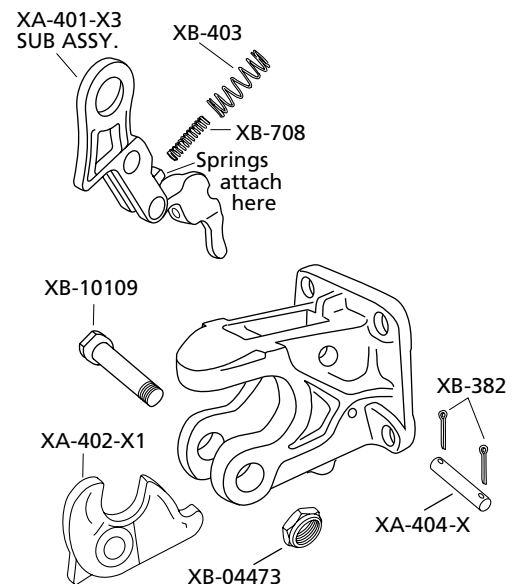
- For off-road* applications, reduce the above maximum capacities by 25% and use with a swivel-mount drawbar.
- For additional specification detail, refer to document number XL-PH233.

* See definition on page 71

Mounting Dimensions



Replacement Parts



CP-360

Application

A rigid mount coupler used for trailers and equipment in over-the-road and off-road applications. Especially useful when frequent and automatic coupling is desired, and when the weight of the drawbar makes it impractical to lift. The latch automatically closes and locks upon coupling.

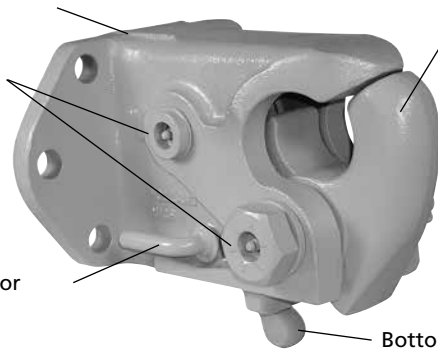
Body is cast steel alloy and heat treated for strength.

Jaw is cast steel alloy and heat treated for strength and wear resistance.

To ensure long life, grease fittings are provided for easy lubrication.

Secondary lock for added safety.

Bottom handle pull is primary lock release.



Weight: 44 lbs. (20 kg)

Capacities

52,000 lbs. (23,590 kg) Maximum Gross Trailer Weight
3,000 lbs. (1,360 kg) Maximum Vertical Load

Drawbar Eye Dimensions

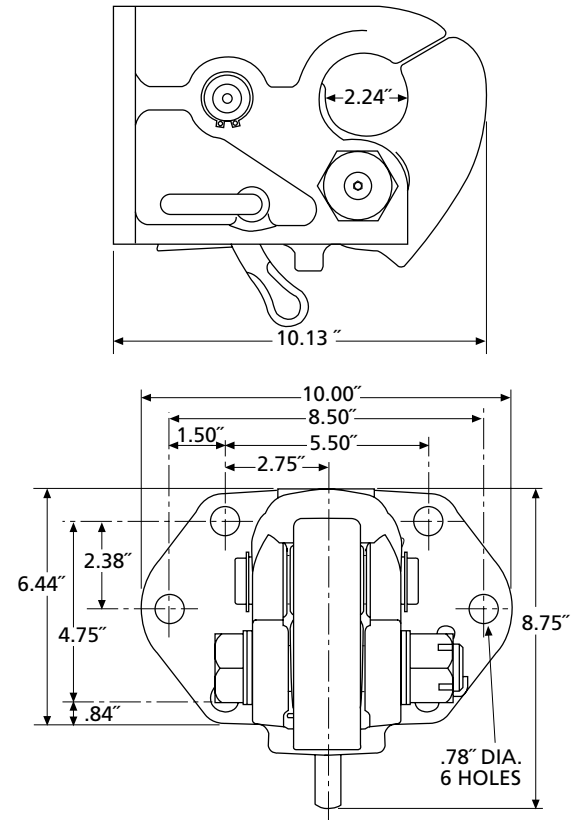
2.50" to 3" I.D. with 1.25" to 1.63" diameter section.

Additional Information

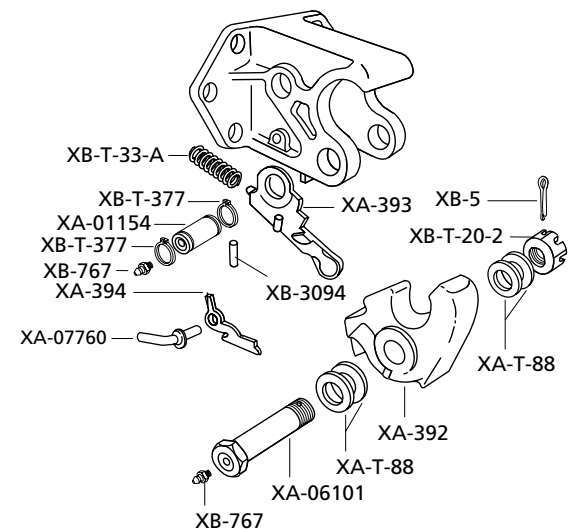
- For off-road* applications, reduce the above maximum capacities by 25% and use with a swivel-mount drawbar.
- For additional specification detail, refer to document number XL-PH231.

* See definition on page 71

Mounting Dimensions



Replacement Parts



Coupler –Rigid and Swivel Mount (Over-the-Road)

CP-740 and CP-730

Application

A very strong, specialized coupler used for trailers and equipment in over-the-road and off-road applications. Especially useful when frequent and automatic coupling is desired. The jaw automatically closes and locks when the drawbar eye is inserted.

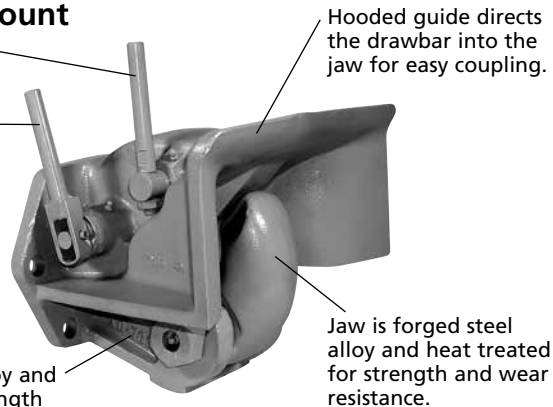
CP-740 Rigid Mount

Primary lock release mechanism.

Secondary lock release mechanism automatically locks for added safety.

To ensure long life, grease fittings (3) are provided for easy lubrication.

Body is cast steel alloy and heat treated for strength and wear resistance.



Hooded guide directs the drawbar into the jaw for easy coupling.

Jaw is forged steel alloy and heat treated for strength and wear resistance.

Weight: 70 lbs. (32.7 kg)

CP-730-S05744 – Rigid mount with added tertiary lock.

Capacities

100,000 lbs. (45,360 kg) Maximum Gross Trailer Weight
20,000 lbs. (9,070 kg) Maximum Vertical Load

Drawbar Eye Dimensions

3" I.D. with a 1.63" diameter section.

Additional Information

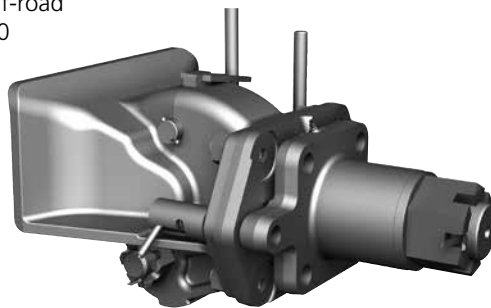
- For off-road* applications, reduce the above maximum capacities by 25% and use with a swivel-mount drawbar.
- For additional specification detail, refer to document number XL-PH268.

* See definition on page 71

CP-730 Swivel Mount

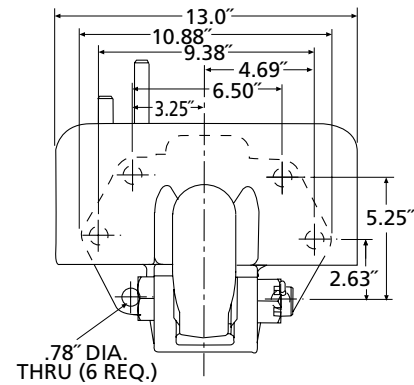
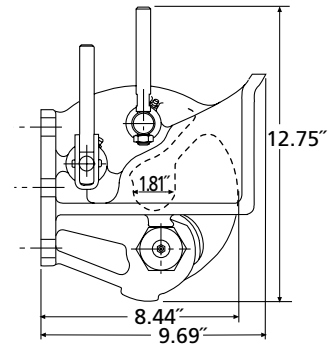
The CP-730 is an on- and off-road coupler featuring the CP-740 coupler with a lubricated, swivel mount housing and spring-loaded lock pin.

When the spring-loaded lock pin is engaged, the coupler remains rigid when coupling, or when towing a trailer equipped with a swivel-style drawbar. Simply disengage the lock pin to return the coupler to swivel mode.

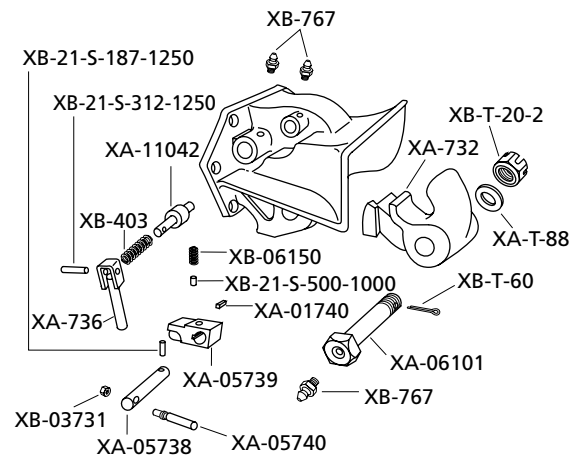


CP-730-S05745 – Swivel mount with added tertiary lock.

Mounting Dimensions (CP-740)



Replacement Parts



PH-990ST71 (Rubber Cushioned)

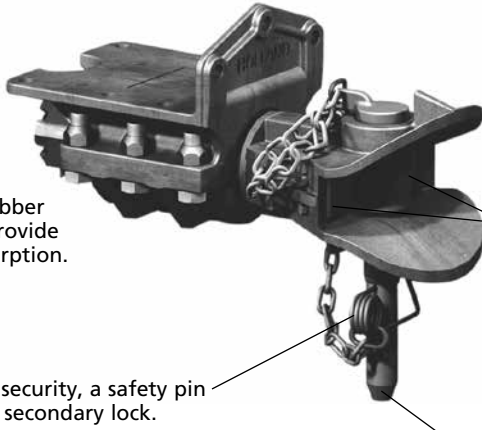
Application

A special frame-mount, swivel style pin and clevis coupler featuring a "fish mouth" head and rubber cushions for shock absorption. Designed for extreme-duty in over-the-road and off-road applications.

Easy to maintain and requires no lubrication.

Internal rubber cushions provide shock absorption.

For added security, a safety pin serves as a secondary lock.



'Fish-mouth' clevis head helps guide the drawbar into position for easier coupling

Wear plates in fish mouth provide a replaceable wear surface and minimize drawbar 'slop'.

The clevis pin is forged steel alloy that is heat treated for strength, durability, and wear resistance.

Weight: 160 lbs. (72.6 kg)

Capacities

100,000 lbs. (45,360 kg) Maximum Gross Trailer Weight
 3,000 lbs. (1,360 kg) Maximum Vertical Load

Drawbar Eye Dimensions

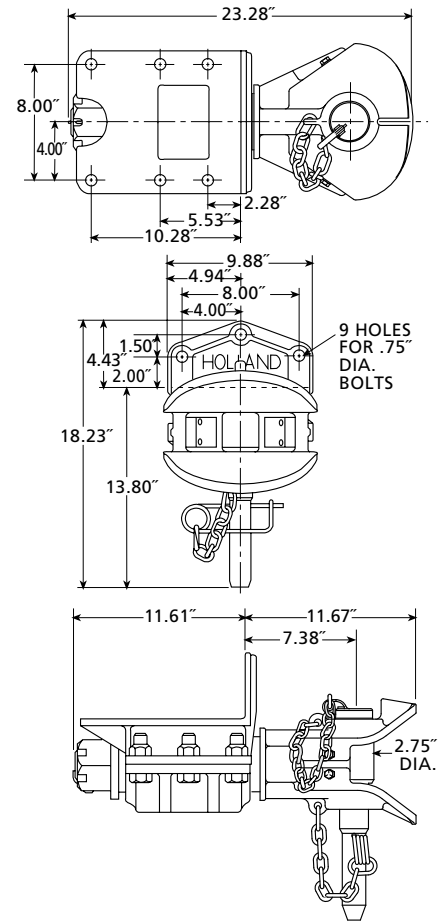
3" I.D. with a 1.63" diameter section.

Additional Information

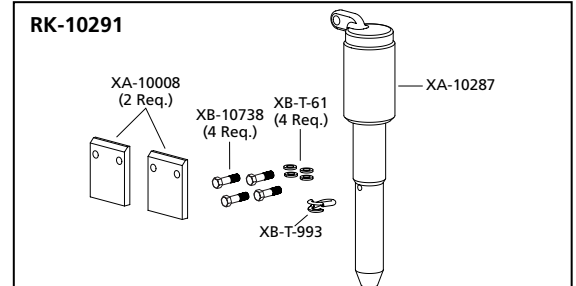
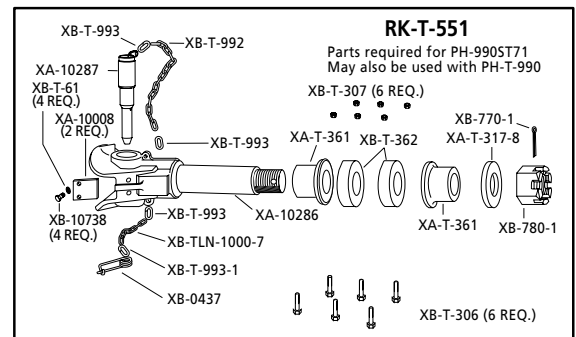
- For off-road* applications, reduce the above maximum capacities by 25%. Not for use with a swivel-mount drawbar.
- For additional specification detail, refer to document number XL-PH219.

* See definition on page 71

Mounting Dimensions



Replacement Parts

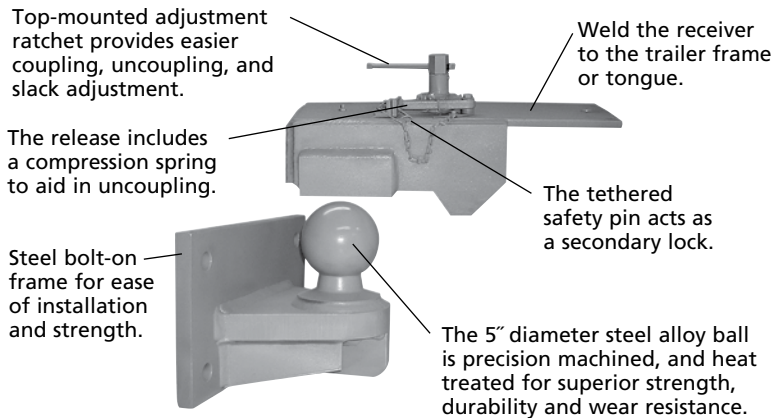


Ball & Receiver Hitch – Rigid Mount (Over-the-Road)

BH-50 (Includes Ball and Receiver Assemblies)

Application

This ball hitch is ideal for heavy-duty over-the-road applications where high articulation (up to 30°) in all directions is required, and in applications where the vehicle and trailer remain coupled. The BH-50 minimizes chocking.



Weight: 135 lbs. (61.2 kg)

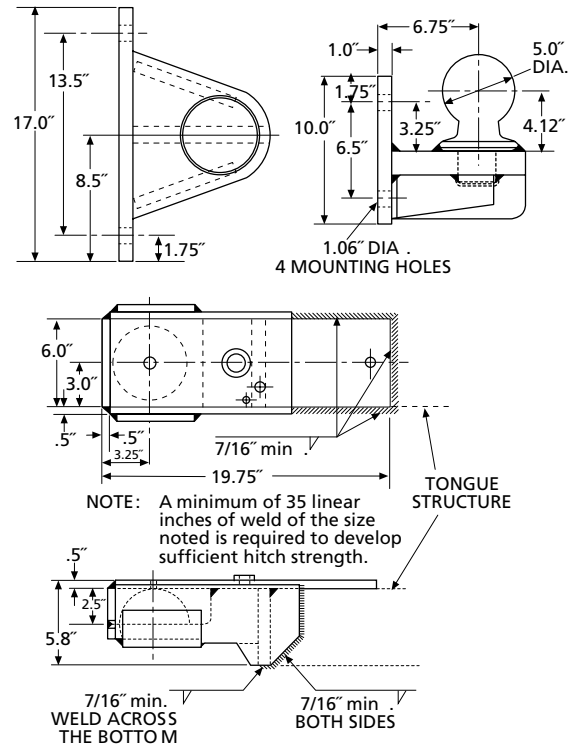
Capacities

80,000 lbs. (36,290 kg) Maximum Gross Trailer Weight
8,000 lbs. (3,630 kg) Maximum Vertical Load

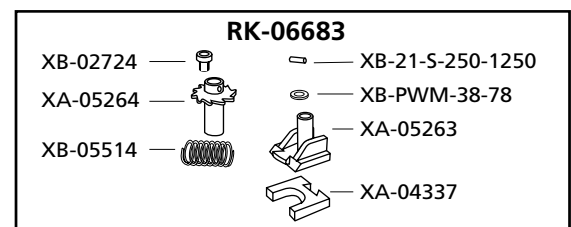
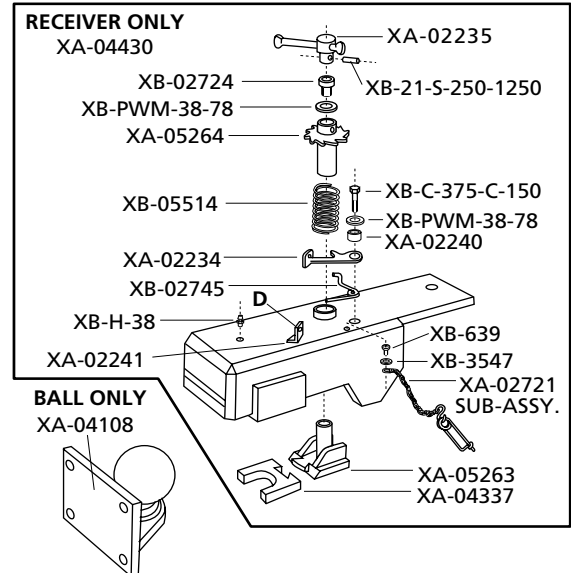
Additional Information

- For additional specification detail, refer to document number XL-PH254.

Mounting Dimensions

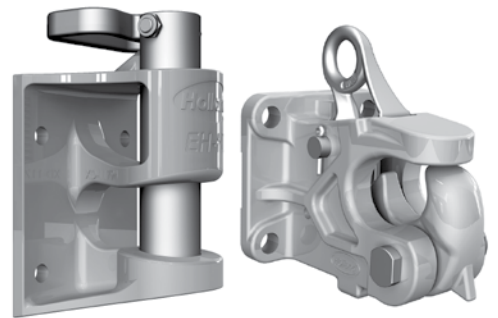


Replacement Parts





**COUPLINGS
INDUSTRIAL / GSE**



- Couplers
- E-Hitch
- Lunettes

Coupler – Rigid Mount (Industrial / GSE)

CP-400-GSE and CP-400-CA

Application

Strong rigid mount couplers that are designed for industrial material handling and ground support applications. The CP-400-GSE and CP-400-CA are useful where coupling is frequent, and quick and easy coupling release is desired. The latch automatically closes and locks upon coupling.

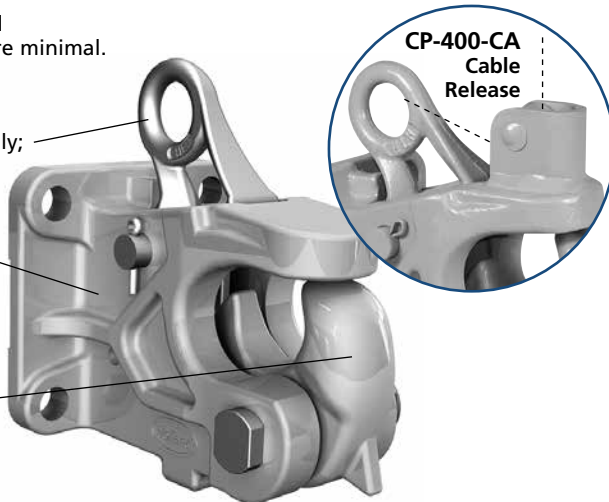
The CP400-CA features an integral roller which accommodates a cable release system to open the coupler from the driver's position.

Lubrication and maintenance are minimal.

Primary lock only; no secondary lock.

Body is cast steel alloy.

Jaw is forged alloy steel and heat treated for strength, toughness, and durability.



Weight: 25 lbs. (11.3 kg)

Capacities

30,000 lbs. (13,610 kg) Maximum Drawbar Pull

7,500 lbs. (3,400 kg) Maximum Vertical Load

IMPORTANT: There is no secondary lock mechanism. This coupler is not designed for over-the-road applications.

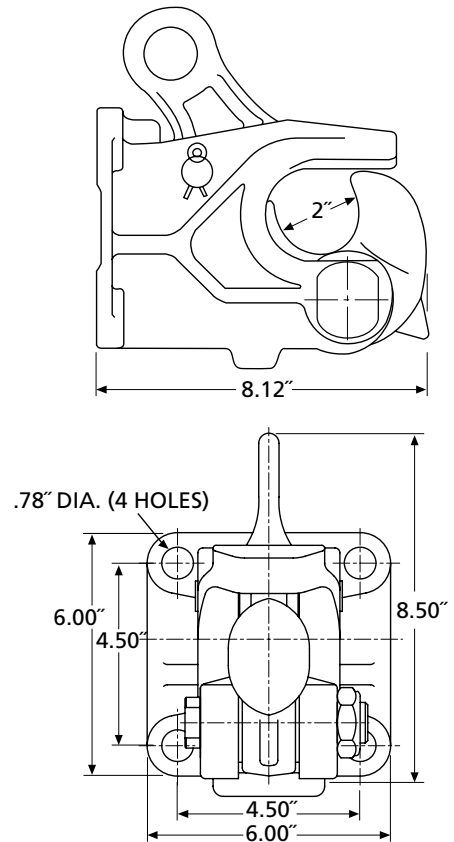
Drawbar Eye Dimensions

2.50" to 3" I.D. with 1.25" to 1.63" diameter section.

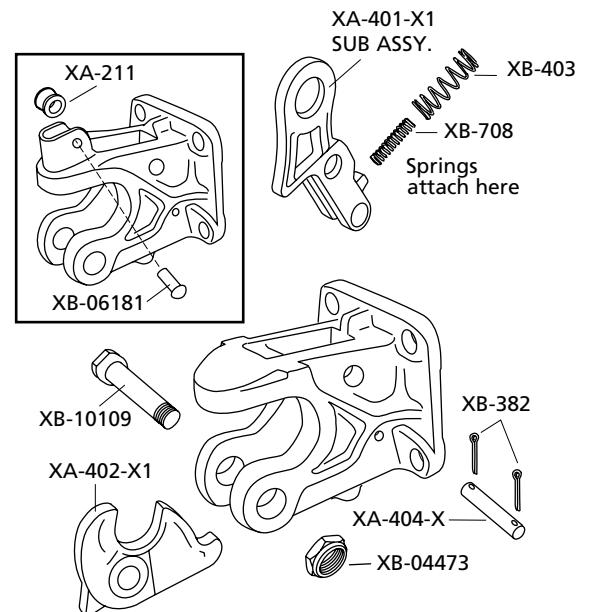
Additional Information

- For more product specific mounting information and operating instructions, refer to SAF-HOLLAND document number XL-PH348 or XL-PH232.

Mounting Dimensions



Replacement Parts



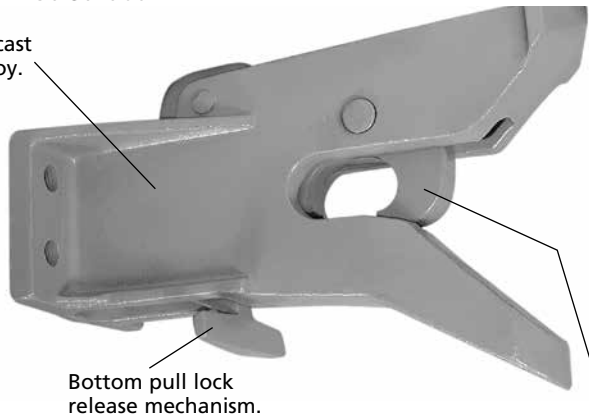
XA-T-150-AF Bolt-On and CP-T-150-S02986 Weld-On

Application

Automatic rigid mount coupler designed for a variety of industrial material handling applications. Useful in instances where coupling is frequent and quick coupling is desired. The latch automatically closes and locks upon coupling.

Available without pre-drilled mounting holes for weld-on installation. Order CP-T-150-S02986.

Body is cast steel alloy.



Jaw remains open upon lock release and automatically closes and locks when drawbar is inserted.

Weight: 15 lbs. (6.8 kg)

Capacities for both Coupler and Coupler Ring

15,000 lbs. (6,800 kg) Maximum Drawbar Pull
50 lbs. (23 kg) Maximum Vertical Load

IMPORTANT: There is no secondary lock mechanism. This coupler is not designed for over-the-road applications.

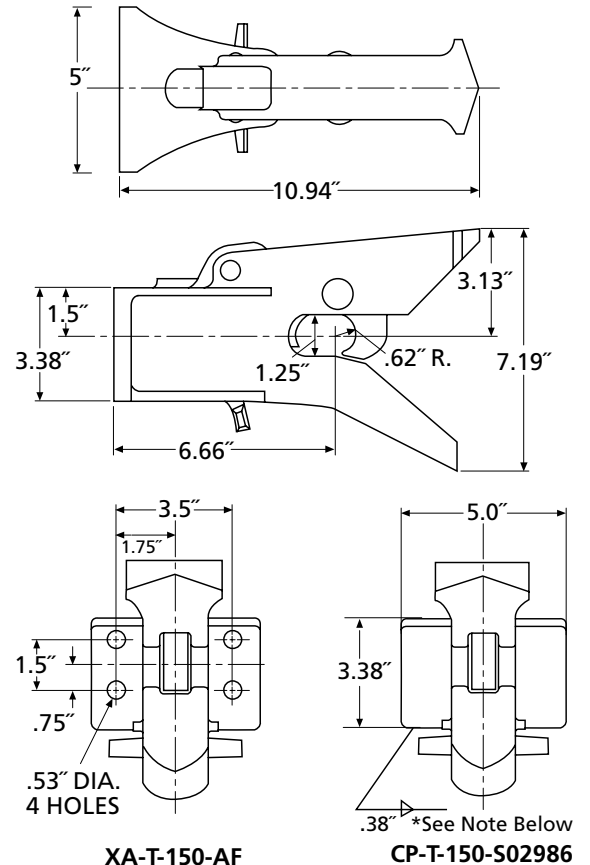
Drawbar Eye Dimensions

Maximum 1" diameter cross-section.

Additional Information

- For more product specific mounting information and operating instructions, refer to SAF-HOLLAND document number XL-PH235.

Mounting Dimensions

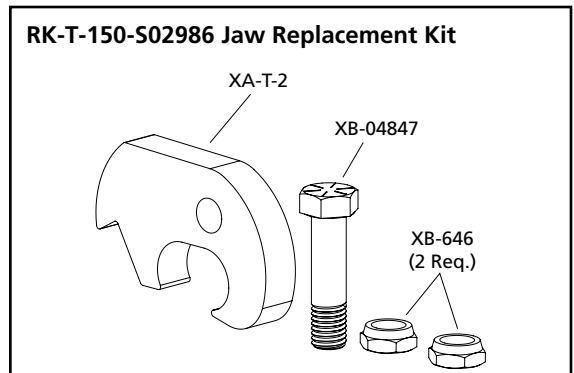


XA-T-150-AF

CP-T-150-S02986

NOTE: Maximum of 16.76 linear inches of .38" fillet weld required to develop rated capacity.

Replacement Parts



eHitch™ MODELS

EH-3050

- 30,000 lb. (13,610 kg) or 50,000 lb. (22,680 kg) Maximum Drawbar Pull, depending on mounting fastener size
- 500 lb. (227 kg) Maximum Vertical Load
- Weight: 21.5 lbs. (9.8 kg)

Drawbar Eye Dimensions

2.25" (57mm) to 3.0" (76mm) I.D. with maximum 1.75" (44mm) diameter section.

FLEX-MOUNT BOLT-ON FLANGE

For original equipment installations or retro-fit / replacement of existing couplings.

The unique flex-mount bolt pattern is compatible with:

- Obsolete HOLLAND E-Hitch models EH-20 and EH-40
- HOLLAND pintle hook mounting patterns, including PH-10RP, PH-T-60-AOL-8, PH-30RP, BH-200RN and BH-50mmRN



EH-HD

- 50,000 lb. (22,680 kg) Maximum Drawbar Pull
- 1,000 lb. (454 kg) Maximum Vertical Load
- Weight: 27 lbs. (12.2kg)

Drawbar Eye Dimensions

2.25" (57mm) to 3.0" (76mm) I.D. with maximum 1.75" (44mm) diameter section.

UNIVERSAL BOLT-ON FLANGE

For original equipment installations or retro-fit / replacement of existing couplings.

Large mounting flange accommodates a broad range of fleet or OEM specified mounting patterns including SAE and metric dimensioning.

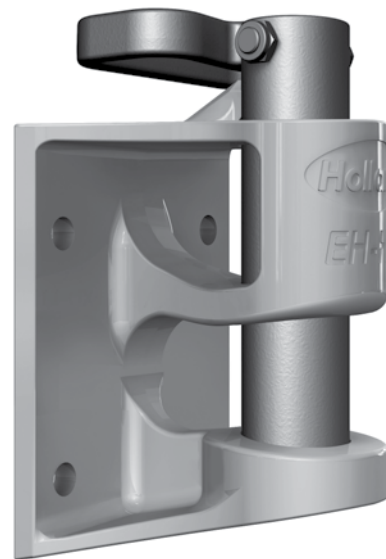
- The user's required mounting pattern, fastener sizes, and rated capacities must be reviewed and approved by SAF-HOLLAND
- Bolt holes are drilled to specification by SAF-HOLLAND
- Standard mounting patterns or custom mounting patterns are also available. Contact SAF-HOLLAND for information.

WELD-ON FLANGE

For original equipment installations or retro-fit / replacement of existing couplings.

Full perimeter weld required for installation

- Bolt holes or holes for plug welding are not permitted



eHitch™ FEATURES

AUTO-LOCK PIN

- Available option for EH-3050 and EH-HD models
- Locks automatically upon closing; then unlocks with a 1/8-turn of the handle when opening
- Auto-lock pins and non-lock pins are interchangeable between the EH-3050 (2014 and later) and EH-HD models
- Simple and efficient lock design – the keyway is cast into the pin and the key is cast into the frame

DURABLE

- Cast carbon steel alloy construction including frame, pin and handle
- Proprietary, precision formed springs are tested to over 1 million compression cycles
- Pins are heat-treated and through-hardened for optimum wear resistance

CORROSION PROTECTION

- Frames receive a 6-stage phosphate pre-treatment prior to an epoxy power coat finish. Standard colors are safety yellow or white. Red is optionally available.
- Pins, springs and handles receive a thermal diffusion zinc coating from a dry, chromate free coating process. This process coats both the outer and inner surfaces of the pin.
- Pins are open on the bottom so that water, ice and debris does not accumulate in the pin.

HOLD-OPEN FEATURE

A standard feature for all non-lock and auto-lock pins. When the pin is raised to its full open position, a 1/8-turn of the handle will engage the hold-open position of the key / keyway.

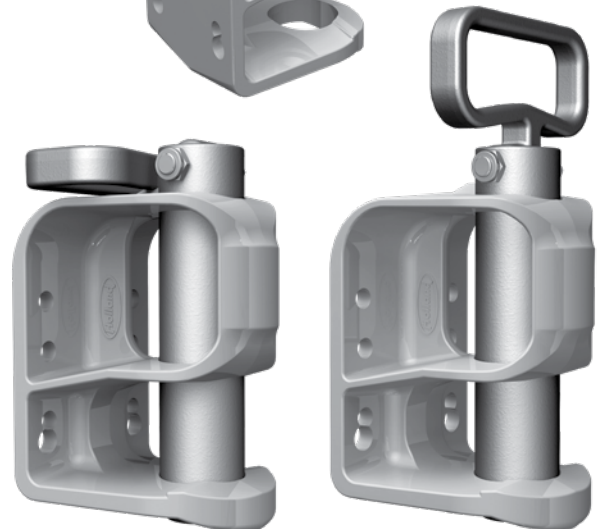
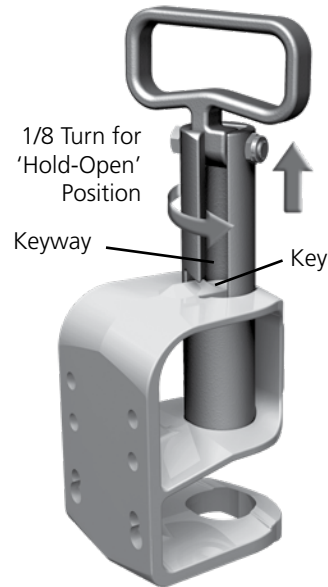
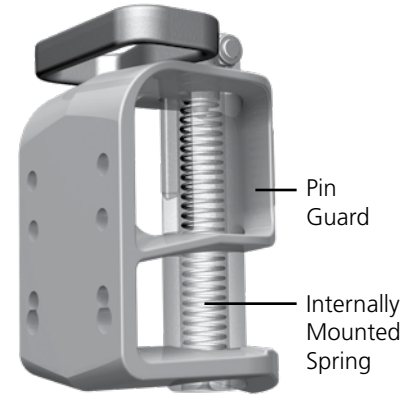
INTERCHANGEABLE HANDLE SETTINGS

All EH models are shipped with handles mounted in the fold-down setting. To change to the other setting, simply remove the handle, turn 180°, and reinstall.



OPTIONAL AUTO-LOCK PIN

IMPACT PROTECTION



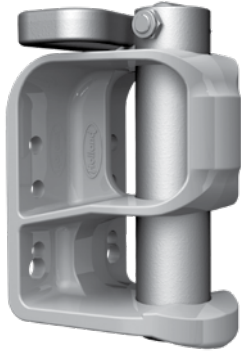
FOLD-DOWN SETTING

Allows the handle to fold down towards the rear of the frame.

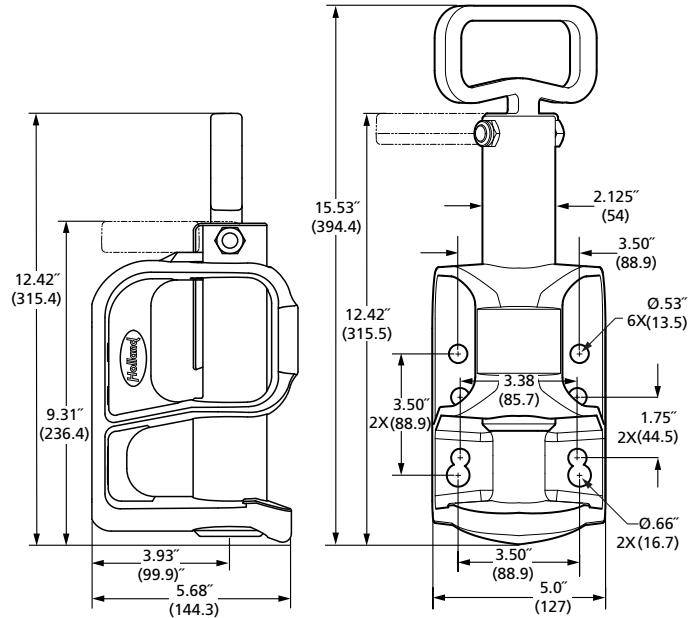
RIGID SETTING

The handle remains rigid and will not fold.

EH-3050 Flex-Mount Bolt-On Flange



OVERALL DIMENSIONS



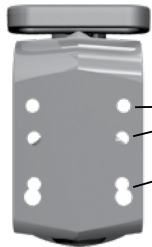
COMPLETE EH-3050 ASSEMBLY PART NUMBERS

With Standard Non-Lock Pin

EH-3050-13	Safety Yellow (Standard Color)
EH-3050-14	White (Standard Color)
EH-3050-17	Red (Optional Color)

With Optional Auto-Lock Pin

EH-3050AL-13	Safety Yellow (Standard Color)
EH-3050AL-14	White (Standard Color)
EH-3050AL-17	Red (Optional Color)



VARIABLE FOUR (4) BOLT MOUNTING PATTERN

Use only Grade 8 bolts.

Two 1/2" bolts are required for all installations in either the top or middle rows.

Two bolts are required in the bottom row.

For 30,000 lb. (13,610 kg) MDBP installation, use upper slot sized for 1/2" bolts.

For 50,000 lb. (22,680 kg) MDBP installation, use lower slot sized for 5/8" bolts.

EH-3050 and EH-HD Replacement Parts



EH-HD

Frames
Not Sold
Separately



EH-3050



RK-11438
Clipped
Washer Set



STANDARD
NON-LOCK PIN

RK-11439
Pin, Spring,
Bolt, Locknut



OPTIONAL
AUTO-LOCK PIN

RK-11789
Pin and Spring Assembly,
Bolt, Locknut

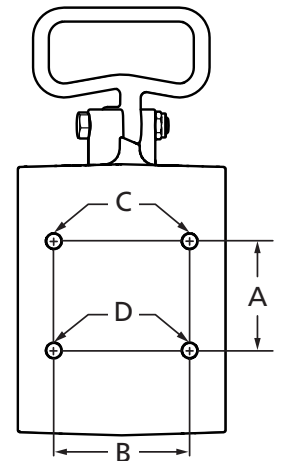
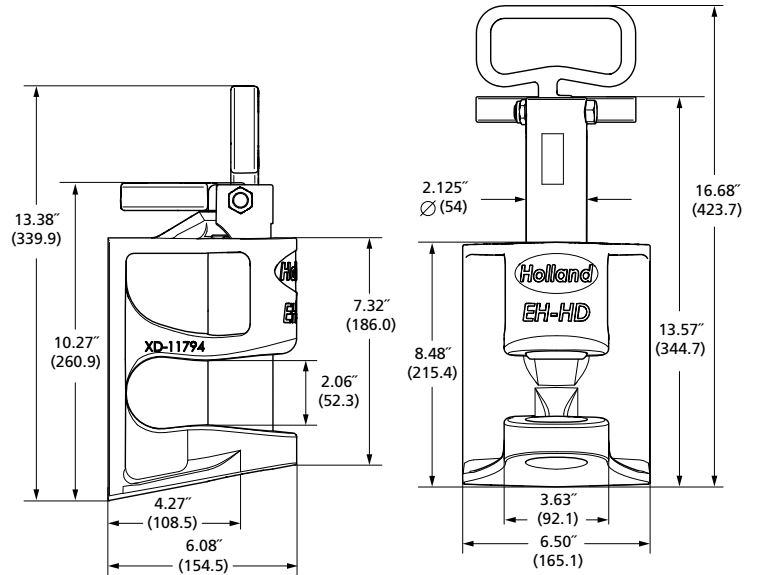


HANDLE

RK-11440
Handle, Bolt,
Locknut

EH-HD Universal Bolt-On Flange and Weld-On Flange

OVERALL DIMENSIONS



MODEL EH-HD	PIN STYLE XX	-	MOUNTING XX	COLOR XX
	'Leave Blank' for standard Non-Lock Pin Add 'AL' for optional Auto-Lock		See Mounting Pattern Codes Below	13 - Safety Yellow (standard) 14 - White (standard) 17 - Red (optional)

Part Number Example:

EH-HDAL-0013 = EH-HD Model with optional Auto-Lock Pin (AL), Weld-On Mounting (-00), Safety Yellow Color (13)

MOUNTING PATTERN CODES					RATED CAPACITIES	
WELD-ON CODE					MAXIMUM DRAWBAR PULL	MAXIMUM VERTICAL LOAD
00	Full perimeter weld (see EH-HD Owner's Manual XL-PH20007UM for welding specification)				50,000 lbs. (22,680 kg)	1,000 lbs. (454 kg)
BOLT-ON CODES*	DIMENSIONS		BOLT SIZE			
	'A'	'B'	'C'	'D'		
01	1.75" (44.5mm)	3.38" (85.7mm)	.50" (12.7mm)	.50" (12.7mm)	30,000 lbs. (13,608 kg)	1,000 lbs. (454 kg)
02	3.50" (88.9mm)	3.50" (88.9mm)	.50" (12.7mm)	.50" (12.7mm)	30,000 lbs. (13,608 kg)	1,000 lbs. (454 kg)
03	3.50" (88.9mm)	3.50" (88.9mm)	.50" (12.7mm)	.63" (15.9mm)	50,000 lbs. (22,680 kg)	1,000 lbs. (454 kg)
04	4.50" (114.3mm)	4.50" (114.3mm)	.75" (19.0mm)	.75" (19.0mm)	50,000 lbs. (22,680 kg)	1,000 lbs. (454 kg)
05	4.75" (120.7mm)	4.75" (120.7mm)	.63" (15.9mm)	.63" (15.9mm)	50,000 lbs. (22,680 kg)	1,000 lbs. (454 kg)

* Large mounting flange is designed to accommodate a broad range of fleet or OEM specified mounting patterns including SAE and metric dimensioning. Contact SAF-HOLLAND for more information regarding currently available patterns or for custom fleet/OEM requested mounting patterns.

DB-010EJ1 and DB-020FK1

- Forged, one-piece steel alloy lunettes
- Non-hardened/non-painted for weldability
- Intended for industrial truck and GSE applications
- Tested in accordance with SAE J847

DB-010EJ1



Weld onto 2"x 4" (11 gauge) structural tubing

DB-020FK1



Forged steel universal weld-on lunette

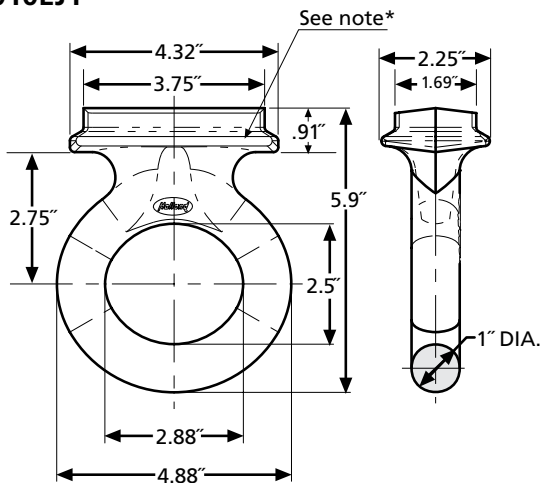
Rigid Tongue Trailers				Hinged Tongue Trailers			
				500 lb. Maximum Vertical Load		Weight	
Capacities		lb.	kg	lb.	kg	lb.	kg
DB-010EJ1 2.88" (73.2mm) Eye	GTW	10,000	4,536	20,000	9,072	15	6.8
	VERTICAL	2,000	907	500	227		
DB-020FK1 3" (76.2mm) Eye	GTW	20,000	9,072	40,000	18,144	22	10
	VERTICAL	4,000	1,814	500	227		

Additional Information

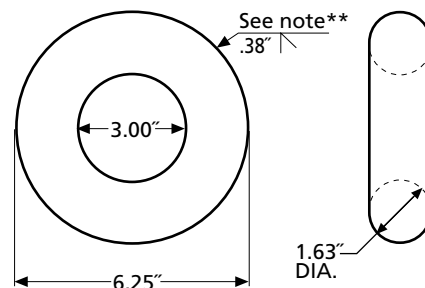
- For additional specifications, refer to document XL-DB124.

Mounting Dimensions

DB-010EJ1



DB-020FK1



*NOTE: A minimum of 12" linear inches of .38" weld on 2"x 4" (11 gauge) structural tubing required to obtain ratings.

**NOTE: 8.5" of linear weld .38" bevel groove weld (3"x 1.25" bar used) required to obtain ratings.

STANDARDIZE ON A SAFETY DEVICE FOR YOUR GSE FLEET

IN THIS BUSINESS, YOU'RE TOWING OR BEING TOWED



The HOLLAND e-Hitch delivers retrofit mounting features unlike any other hitch...

EH-3050 – 'Flex-Mount' features multiple, cast-in, SAE dimensioned bolt patterns.

EH-HD – 'Universal-Mount' features customizable, factory drilled, SAE and Metric dimensioned bolt patterns, plus a weld-on mounting option. The EH-HD includes design features for aircraft push-back.

Auto-Lock or Non-Lock Pins are interchangeable, including between e-hitch models.

U.S. and other patents apply

Member



International Airport Equipment Manufacturers Association



EH-3050
'Flex-Mount'

EH-HD
'Universal-Mount'

www.safholland.us 888-396-6501

